

ProVetScan EQ-1

Compact ultrasound scanner with
applicator for cows and mares



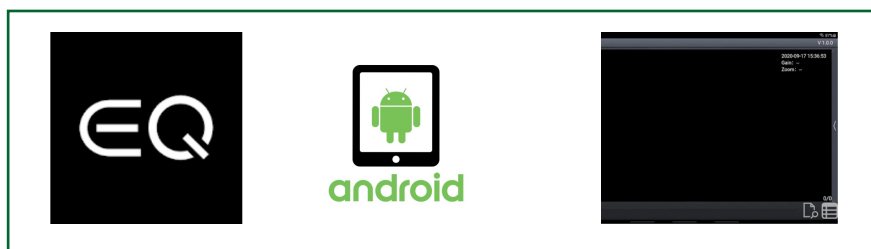
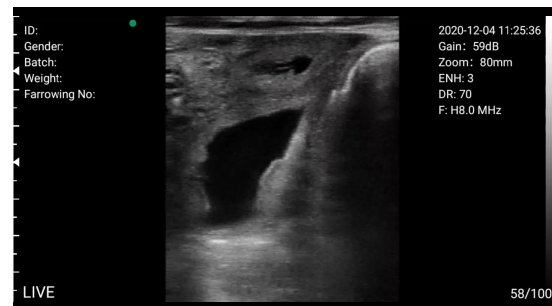
Provetscan EQ-1 Wi-Fi Probe



Compact ultrasound scanner built in an applicator for reproductive diagnosis in cows and mares.

Specifications:

Monitor: Android tablet series.
Frequency: 6,5-8 MHz
Scanning mode: linear
Number of crystals: 80 elements
Scanning depth: 40-100 mm
Wi-Fi Chip: 2,4-5G
Software: Gain, Depth, Enhancement, Dynamic Range, Cine-loop, save images and videos.
Grey scales: 256 levels
Battery working time: 7 hours
Size: 800x35x30 mm
Weight: 660 g



Included:

Provetscan EQ-1 wifi probe
Neck belt
2A Charger

Optional:

Android Tablet or ipad mini
Protection cover case