

ProVetScan AS6

High quality of control in porcine,
ovine and caprine



Provetscan AS Wi-Fi Probe



High Quality Ultrasound scanner for reproductive diagnostic in Porcine, Ovine and Caprine.

Specifications:

Monitor: Smartphones and tablets of Android and iOS.

Frequency: 3,5 - 5 MHz

Scanning mode: Microconvex

Number of crystals: 96 crystals

Scanning depth: 90-180 mm

Software: Gain, Depth, Enhancement,

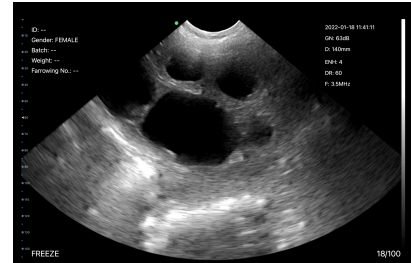
Dynamic Range, Harmonic, save image and videos.

Grey levels: 256 levels

Battery working time: 5 hours

Size: 120x43x25 mm

Weight: 300 g



Included:

Provetscan AS Wi-Fi probe
Neck belt
2A Charger
Wireless charger
Transport suitcase

Optional:

iPad or Android Tablet
Protection cover

New VeTec S.L.