

ProVetScan CR

Rectal convex reproductive diagnosis in
cattle and horses



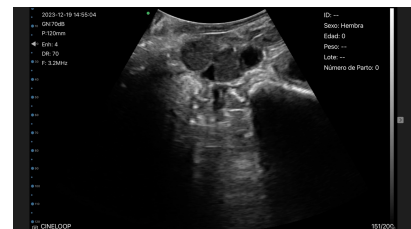
Provetscan CR Wi-Fi Probe

Ultrasound scanner for rectal convex reproductive diagnostics in cows and mares.



Specifications:

Monitor: iPad series.
Frequency: 3,2-5 MHz
Scanning mode: Convex
Number of crystals: 128
Scanning depth: 80-240 mm Display mode: Modo B
Chip Wi-Fi: 2,4-5G
Software: Gain, Depth, Enhancement, Dynamic Range, Cine-loop, Grid, measurements, gestation age calculation, save images and videos.
Grey levels: 256
Battery working time: 6 hours
Main unit size: 180x55x23 mm
Cable length: 1,80 m
Weight: 400 g



VetUS



Included:

Provetscan CR Wi-Fi probe
Neck harness
2A Charger
Transport suitcase

Optional:

iPad mini
Waterproof cover IP68
Wireless charger

New VeTec S.L.